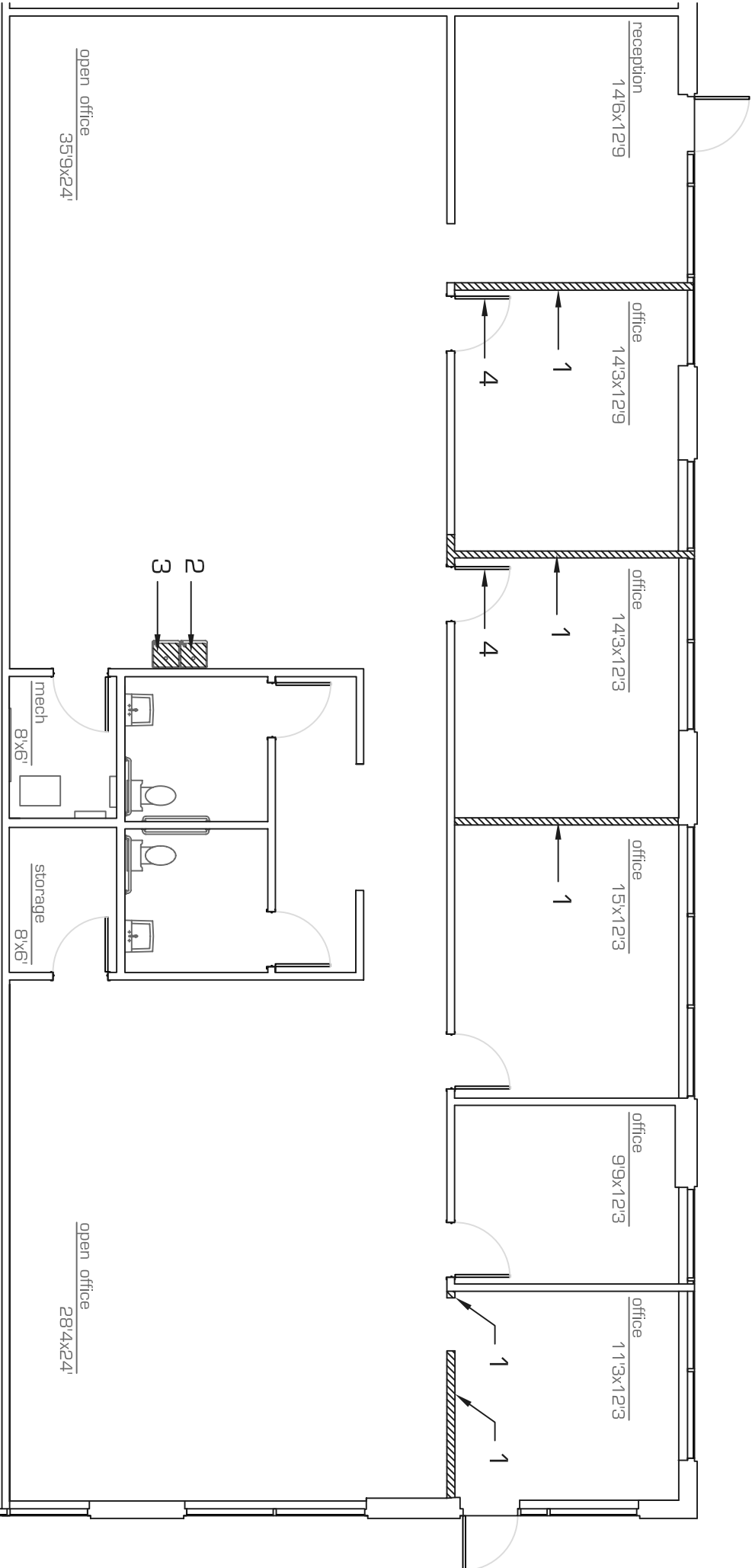


Koill Cotton Center

4050 East Cotton Center Boulevard

suite 77 - 3,163 SF



- NOTES:**
1. Full height non-structural walls for demolition
 2. Remove drinking fountain
 3. Existing plumbing to remain to accommodate new sink
 4. Remove door and framing
* remove all carpet



as-built/ demo plan
 scale: 1/8" = 1'-0"
 14.February.2007

*All dimensions are approximate
 *All information is of general nature

precision MEASUREMENTS
 as built . space plans
 architectural design
 6 0 2 . 7 9 0 . 6 4 1 2