

Koill Cotton Center

4050 East Cotton Center Boulevard

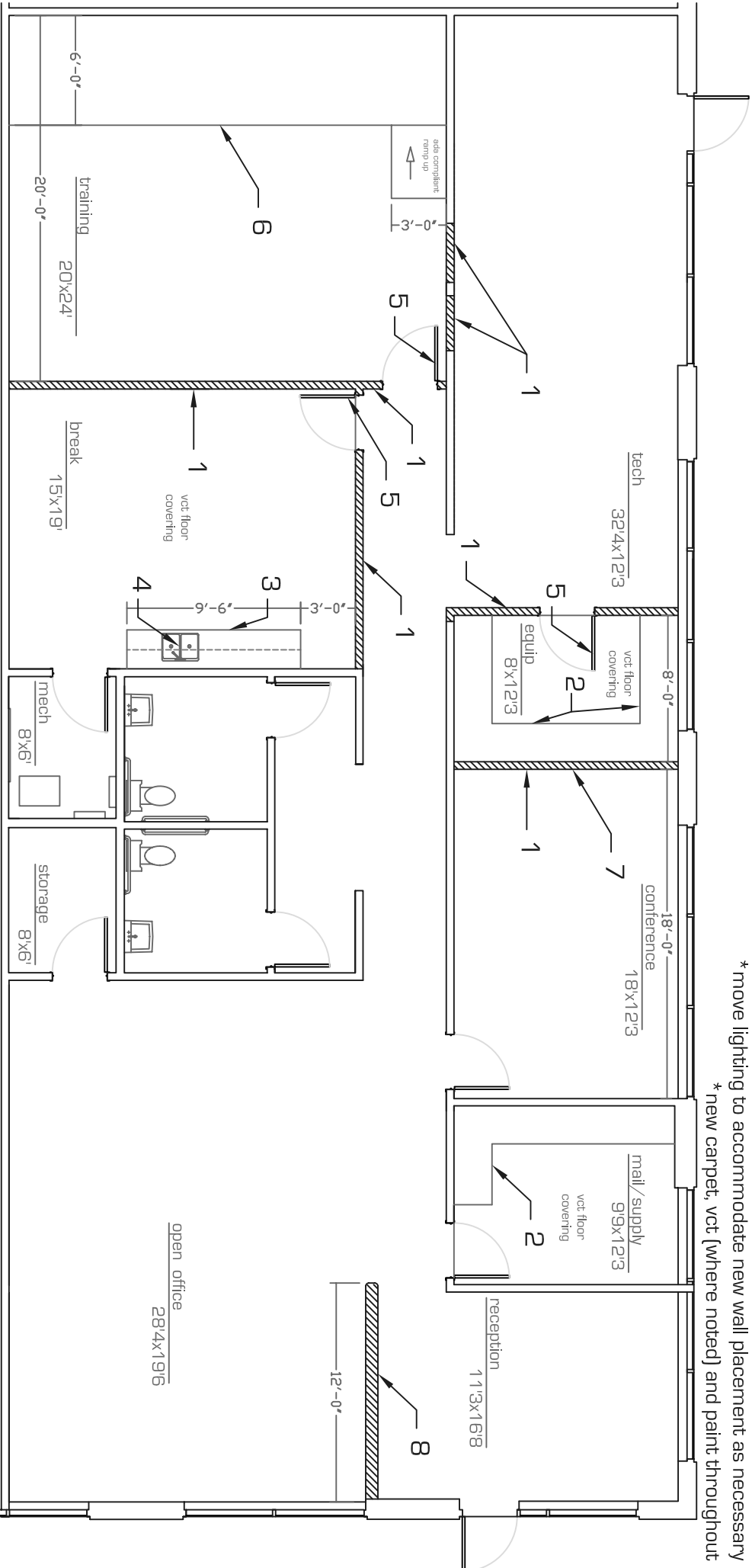
suite 77 - 3,163 SF

NOTES:

1. New full height 3 5/8" metal stud with drywall on both sides non-structural wall
2. New 25" deep laminate counters (standard height, color TBD)
3. New laminate cabinetry below and above with sink (color TBD)
4. New double basin deep stainless steel sink with standard fixture
5. New 36" door to match existing door style and height
6. New 6" raised platform constructed of 2x6's and plywood with carpet finish - ADA ramp up to platform
7. Refer to additional drawing for electrical and data requirements (as drawn by prospective tenant)
8. New full height 5 1/2" metal stud with drywall on both sides non-structural wall with bull nose corners

* extend ceiling grid as necessary
* replace ceiling tiles as necessary

* move lighting to accommodate new wall placement as necessary
* new carpet, vct (where noted) and paint throughout



construction plan

scale: 1/8" = 1'-0"

14. February, 2007

* All dimensions are approximate
* All information is of general nature



precision MEASUREMENTS

as built, space plans
architectural design

6 0 2 . 7 9 0 . 6 4 1 2

